

# Sew Caroline

SEWING PATTERNS + ACCESSORIES

SEWCAROLINE.COM

©CAROLINE HULSE 2015

## Holiday Throw Pillow

### SUPPLIES

1/2 YARD DUCK CLOTH/CANVAS (54" WIDE)

1/4 YARD QUILTING COTTON FOR TREES (HAPPY HOME, GRASS IN SUNLIGHT)

1/8 YARD QUILTING COTTON FOR TRIM (HAPPY HOME, ENTRYWAYS JOYEUX)

1 14"X14" PILLOW INSERT

### CUTTING INSTRUCTIONS

FROM CANVAS:

3 - 6.5"X6.5"

6 - 2.5"X3"

2 - 4 X 15"

2 - 9" X 15"

FROM TREE FABRIC:

3 - 6.5" x6.5"

3 - 1.5"X3"

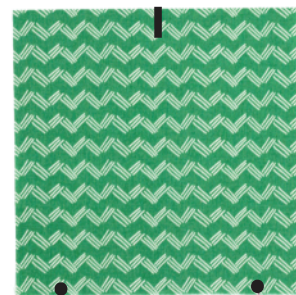
FROM TRIM FABRIC:

2 - 2"XWOF

### SEWING INSTRUCTIONS

TREE BLOCK CONSTRUCTION (1/4" SEAM ALLOWANCES USED)

1. ON YOUR 6.5" SQUARE OF QUILTING COTTON, MARK 1" FROM EACH EDGE ALONG THE BOTTOM AND MARK A 1/4" MARK DOWN THE CENTER ON THE TOP.



2. USING A ROTARY CUTTER + MAT, CUT AT AN ANGLE FROM THE BOTTOM RIGHT MARK TO THE TOP OF THE MIDDLE MARK. MOVE THIS PIECE AWAY AND CUT FROM THE BOTTOM LEFT MARK TO THE BOTTOM OF THE TOP MIDDLE MARK. (TIP: YOU CAN STACK YOUR QUILTING COTTON ON TOP OF YOUR CANVAS FOR THIS STEP AND CUT THEM BOTH AT ONCE)



3. USING THE TRIANGLE FROM THE QUILTING COTTON, MATCH A CANVAS RIGHT SIDE (THE ONE WITHOUT THE 1/4" SEAM ALLOWANCE AT THE TOP POINT). PLACE THIS RIGHT SIDES TOGETHER AGAINST THE TRIANGLE ALIGNING THE BOTTOMS OF THESE PIECES (1/4" OF THE CANVAS WILL STICK UP FROM THE TOP). PRESS THE SEAM ALLOWANCE TO ONE SIDE.



4. TAKE THE OTHER SIDE OF THE CANVAS AND ALIGN IT ALONG THE OTHER EDGE OF THE TRIANGLE, ALIGNING THE BOTTOMS AGAIN. (AGAIN, 1/4" OF THE CANVAS WILL STICK UP FROM THE TOP) PRESS THE SEAM ALLOWANCE TO ONE SIDE. SET THIS PIECE ASIDE.



5. SEW TOGETHER 2 SMALL CANVAS PIECES WITH ONE COTTON PIECE TO CREATE THE TREE TRUNK.



6. SEW THE TRUNK PIECE TO THE TREE PIECE.



7. REPEAT THESE STEPS FOR ALL THREE TREE BLOCKS.

#### PILLOW CONSTRUCTION

1. SEW THE THREE TREE BLOCKS TOGETHER ALONG THEIR LONG EDGES. SQUARE THIS PIECE UP SO IT IS 15"X8"



2. SEW THE TWO 4"X15" CANVAS STRIPS TO THE TOP AND BOTTOM TO FORM THE PILLOW FRONT.



3. TAKE THE TWO STRIPS OF TRIM FABRIC AND SEW RIGHT SIDES TOGETHER ALONG THE SHORT ENDS. PRESS THIS LONG STRIP IN HALF, WRONG SIDES TOGETHER, ALONG THE LONG ENDS.

4. STARTING IN THE CENTER ALONG ONE OF THE SIDES, PIN THE TRIM WITH THE RAW EDGES OF THE TRIM TOUCHING THE RAW EDGE OF THE PILLOW FRONT. WHEN YOU GET TO THE CORNERS, USE A THE MITERING TECHNIQUE BY FOLDING THE TRIM AT A 90\* ANGLE UP, FINGER PRESS, AND A 90\* ANGLE DOWN. THIS WILL CREATE A FOLD IN THE TRIM AT THE CORNER.



5. SEW THE TRIM ON USING A SCANT 1/4" SEAM ALLOWANCE. AS YOU GET TO THE MITERED CORNER, STOP RIGHT AT THE FOLD, PICK UP YOUR PRESSERFOOT AND NEEDLE AND START AGAIN RIGHT AT THE FOLD ON THE OTHER SIDE.



6. WHEN YOU REACH THE BEGINNING OF YOUR TRIM AGAIN, OVERLAP IT BY 3/8" AND CUT THE REMAINDER OFF. PLACE THESE TWO ENDS RIGHT SIDES TOGETHER AND STITCH AT 3/8". LAY FLAT AND FINISH SEWING THE TRIM AROUND THE EDGE. SET THIS PIECE ASIDE.



7. TAKE THE TWO 9"X15" PIECES AND FOLD TOWARDS THE WRONG SIDE AT 1/2" AND AGAIN AT 1/2" ALONG ONE OF THE 15" SIDES. TOPSTITCH ALONG THE FOLDED EDGE. DO THIS FOR BOTH PIECES.

8. LAY THE FRONT OF YOUR PILLOW RIGHT SIDE UP AND LAYER THE TWO 9"X15" PIECES ON TOP OF IT MATCHING ALONG ALL FOUR RAW EDGES. SEW IN PLACE AT 1/4" MAKING SURE TO KEEP THE CORNERS MITERED.



9. FLIP YOUR PILLOW TO THE RIGHT SIDE AND INSERT A 14" X14" PILLOW FORM TO COMPLETE YOUR PROJECT.

