

week FIVE



Sylvie the Sloth

designed by:
Emily at
oh yay studio!

estimated sewing time:
2 hours

Sylvie the sloth is such a party animal! She LOVES acting as a bookend! (Then she's closer to her favorite reading material!) Sylvie can also be used as a doorstop or super snazzy plushie!



 #janomecamp19

www.janome.com/summercamp2019

JANOME



SYLVIE THE SLOTH

week FIVE



MATERIALS & SUPPLIES

- 1/2 yard of main fabric in brown remnants of coordinating felt or wool for sloth face (fabric that does not fray, large piece being about 5" x 7")
- Remnants of coordinating fabric for sloth hands
- Bag of poly-fil
- Needle & thread for hand stitching sloth closed
- Yarn + pom pom maker
- 5" x 7" piece of coordinating fabric for hat
- 5" x 7" piece of fusible interfacing
- Bag of rice or beans
- Ziplock baggie
- Clear packing tape
- Printed pattern - Pages 5-9

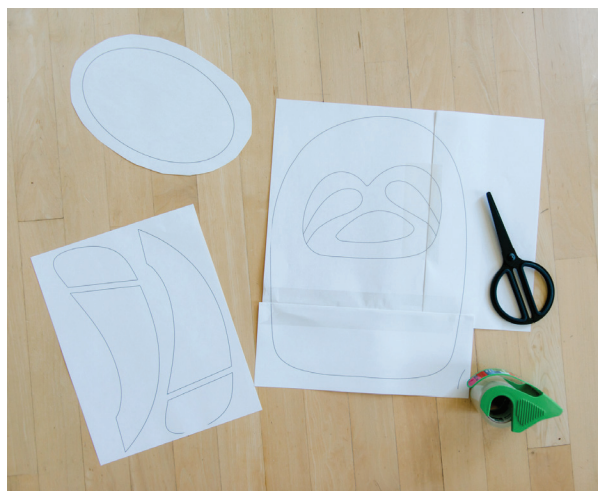


INSTRUCTIONS

STEP 1: CUT OUT PIECES

From main brown fabric cut:
2 body shapes
1 gusset
4 arms (2 of each facing arm)

From coordinating fabric cut:
Face pieces
4 hand pieces



#janomecamp19

www.janome.com/summercamp2019

JANOME



SYLVIE THE SLOTH

week FIVE

STEP TWO: SEW FACE ONTO BODY

Lay out the face pieces (face, eyes, nose) onto one of the body pieces according to the layout on the pattern. Pin in place and slowly stitch around each feature.

Note: I found it easier to stitch the eyes and nose to the face first and then stitch the whole face onto the body.

STEP THREE: SEW ARMS

With right sides together stitch the hand piece onto each of the arm pieces (4 total). Then, with right sides together, stitch 2 arms together. Then stitch up the hands to make fingers; do this by lowering the foot on your sewing machine, sewing about 1 inch up, raising your foot (leaving your needle in the fabric), spinning your fabric, and stitching back towards the top of the fingers. Then stuff the arm with poly-fil, leaving about 1/2" at the top unstuffed. Repeat this for both arms.

STEP FOUR: SEW HALF OF GUSSET

Start by folding the gusset in 1/2 lengthwise and mark the center on each side with 2 pins. Repeat this widthwise and mark with 2 pins. This will give you the center, each direction, of the gusset to make sure that you are lining it up to the body properly.

Then, fold the back body piece in 1/2 (top to bottom) and mark with a pin in the center. With right sides together, line up the gusset along the bottom side and position so that the center marks line up with both the gusset and the body. Then pin the rest of the half of the gusset in place along the back body panel and stitch together, starting and stopping at each pinned side of the gusset.





SYLVIE THE SLOTH

week FIVE

STEP FIVE: ASSEMBLE TOGETHER

With right sides together, begin by lining up the body of the sloth, making sure all edges are flush with each other. Pin in place as you work along the body, and make sure to add in the arms; to do this, place the arms inside the body and line up along the edge of the sloth. When you reach the gusset, bring the front body along the unsewn side of the gusset and keep pinning. Leave an opening, about the size of your hand, unstitched along one side of the body for poly-fil. Then with your sewing machine, slowing work around the body stitching it together. Be sure to pivot the body of the sloth when you reach the gusset so that you don't accidentally sew the back body to the front.

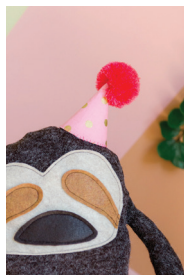
STEP SIX: MAKE + ATTACH HAT

Iron the fusible interfacing to the backside of your coordinating hat fabric, then cut out the shape from the pattern. Line up the long edges of the hat, and stitch together with a zig zag stitch on your sewing machine or hot glue together. Hand stitch or hot glue a store-bought or homemade pom pom to the top of the party hat.

STEP SEVEN: STUFF, CLOSE, AND FINISH

Stuff your sloth body as full as you want it (I tend to stuff mine with a lot, so that it's stable and sturdy, after all this is a bookend or door stop, you don't want it to be flimsy). Before filing it completely, fill your ziplock baggie with rice or beans, close up and then tape shut a few times so that the contents don't come loose inside. Then put the filled ziplock into the sloth and position it towards the bottom to weight it down; fill around with poly-fil until it's desired firmness! :) Stitch the opening closed with a needle and thread. To attach your part hat, either hand stitch around the bottom edge where desired or hot glue in place!

Don't forget to tag us on Instagram with [#janomecamp19](https://www.instagram.com/janomecamp19) so we can see your project!



[#janomecamp19](https://www.instagram.com/janomecamp19)

www.janome.com/summercamp2019

JANOME

SILVIE SLOTH PLUSH

BOOKEND or DOORSTOP

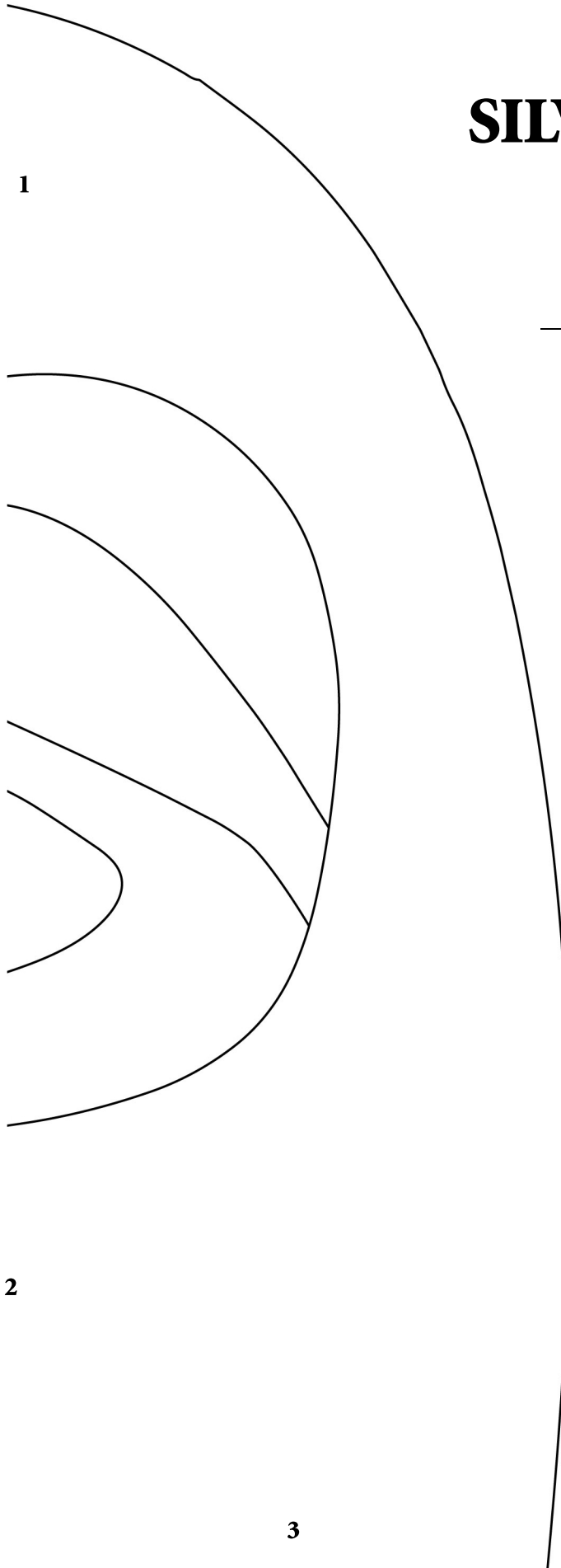
pattern from oh yay studio

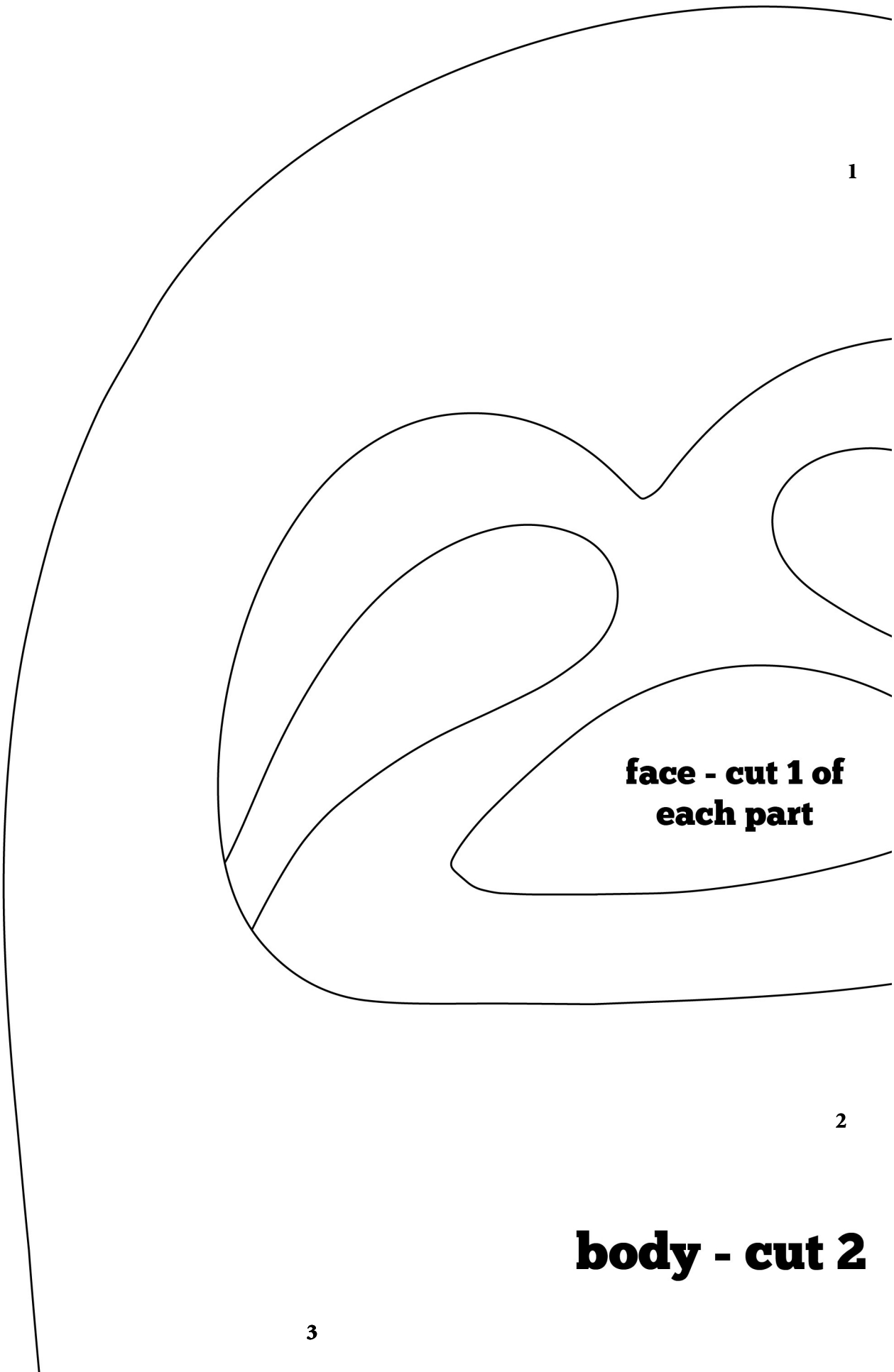
www.ohyaystudio.com
@ohyaystudio

1

2

3





1

**face - cut 1 of
each part**

2

body - cut 2

3

3

3

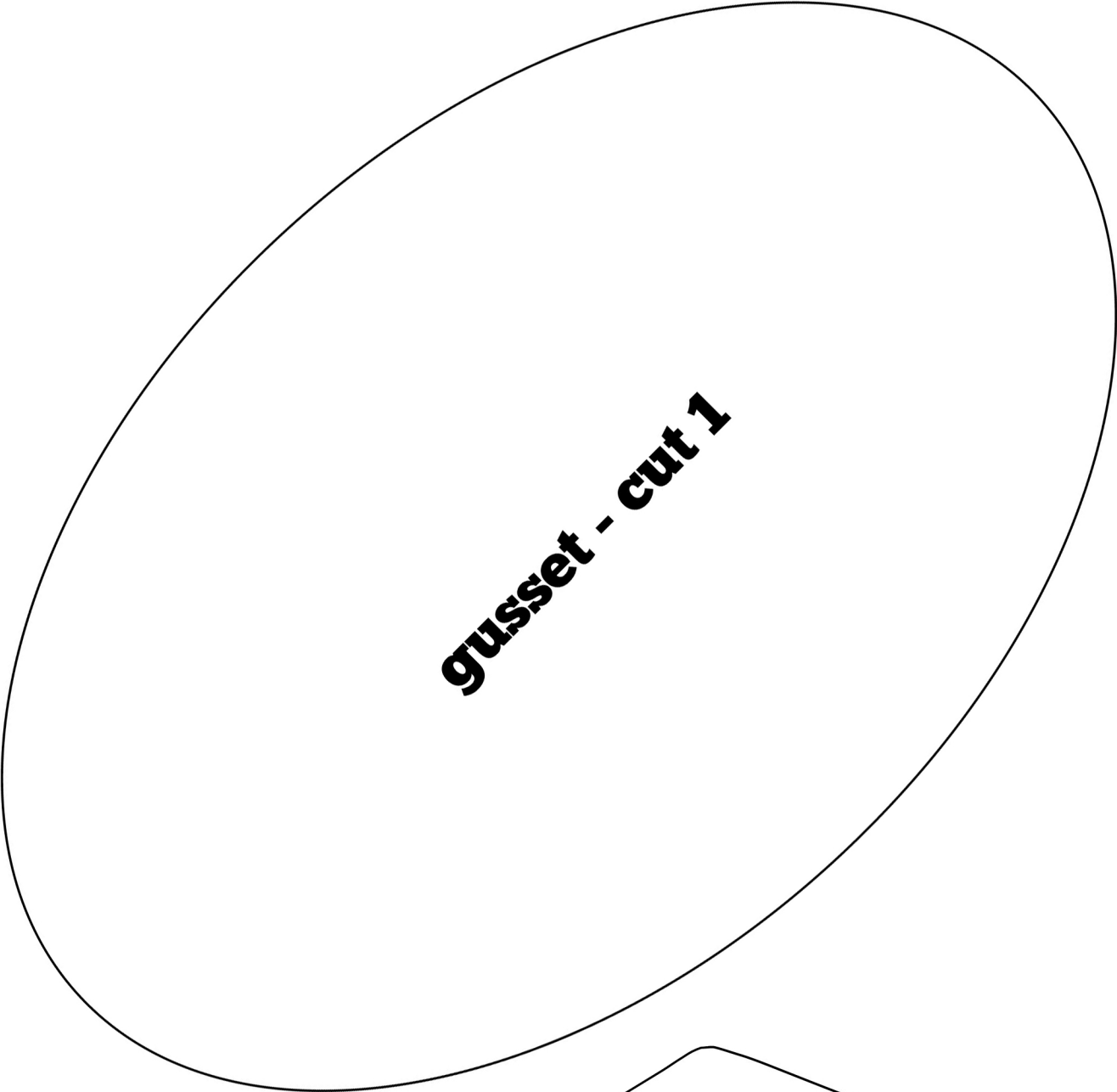


hand - cut 2

arm - cut 2

arm - cut 2

hand - cut 2



gusset - cut 1



party hat - cut 1