

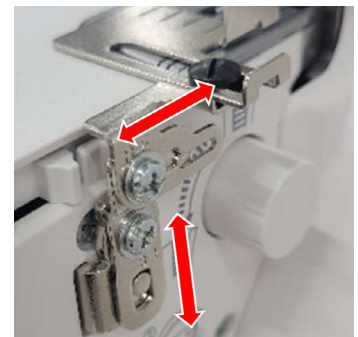
### CLOTH GUIDE

Part No. 202-525-008

Fits "Sailing Line" 454D and overlock/serger machines.

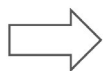
As its name suggests, this guide helps keep your seams straight as you sew. Especially useful on flatlock seams and other seams where the knife is lowered. It is possible to adjust the position of the guide to compatible with the new Sailing Line (MYLOCK 454D)

**NOTE:** Existing Cloth Guide (202038009) cannot be used with the 454D or Sailing Line



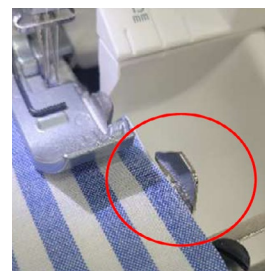
#### Without Knife

It is useful for sewing directly flatlock and pintucking with decorative threads.



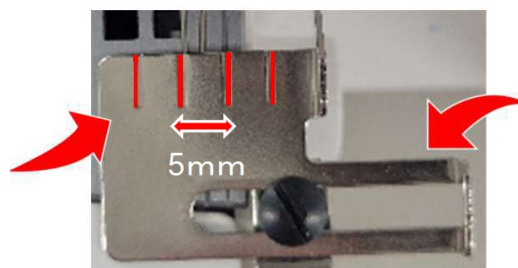
#### With Knife

You can sew the fabric while keeping a certain cut-off allowance



#### Tip

This item has the guidelines by 5mm clearance



Adjustable slide for placement